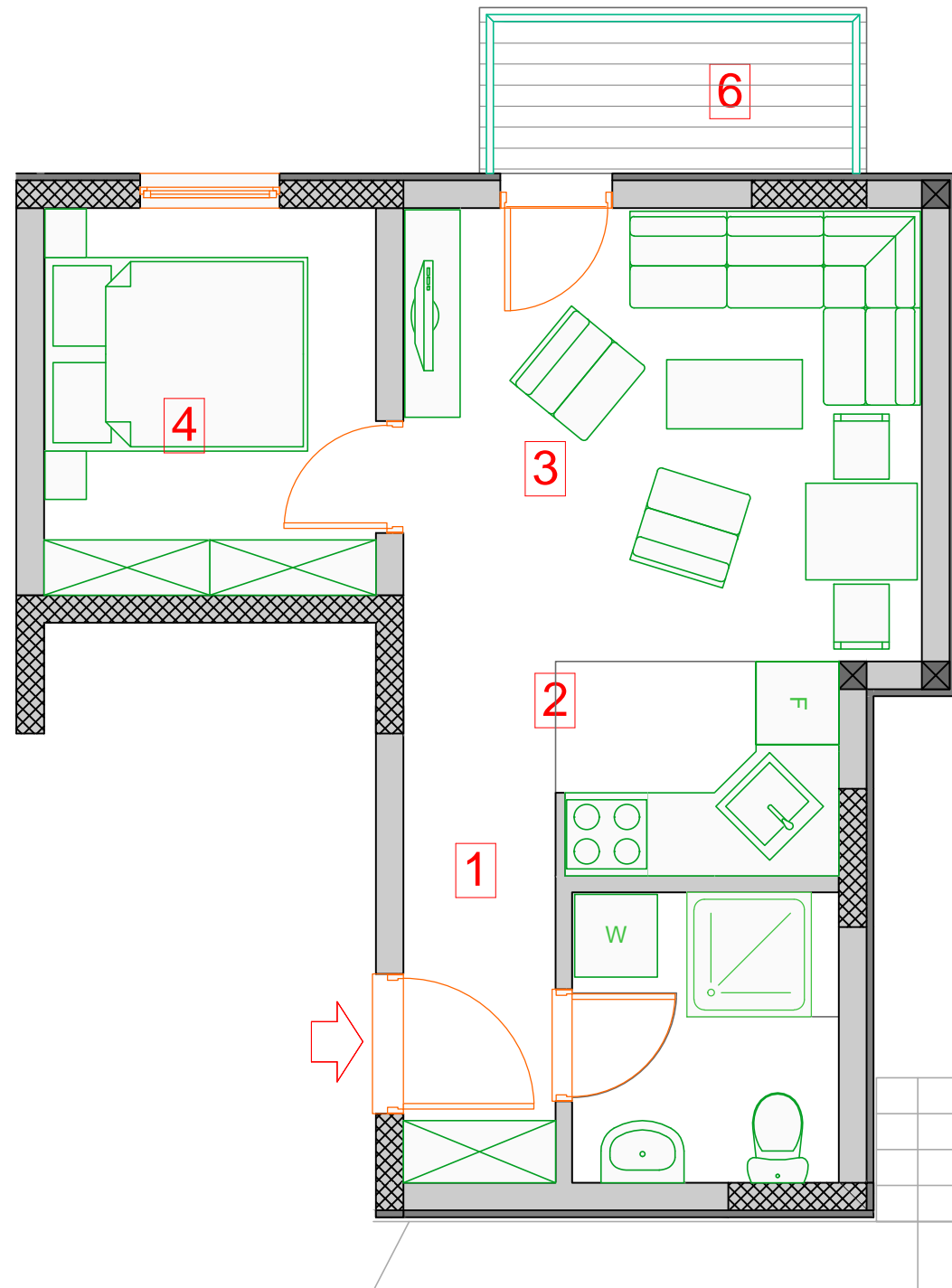


OSNOVA POTKROVLJA, STAN BR.7, P=32.70m²



Jednosoban stan	No	STAN br. 7	P(1.00)m ²	SRPS(Px0.97)m ²	Obim m ¹	Obrada poda
	1	Ulaz-hodnik	3.10		7.84	Parket
	2	Kuhinja i trpezarija	4.18		9.40	Keramika
	3	Dnevna soba	12.30		12.86	Parket
	4	Spavaća soba	6.72		10.4	Parket
	5	Kupatilo	4.05		8.06	Keramika
	6	Terasa	3.36		48.56	Keramika
ukupno.....		33.71m ²				
ukupno.....SRPS			32.70m ²			

